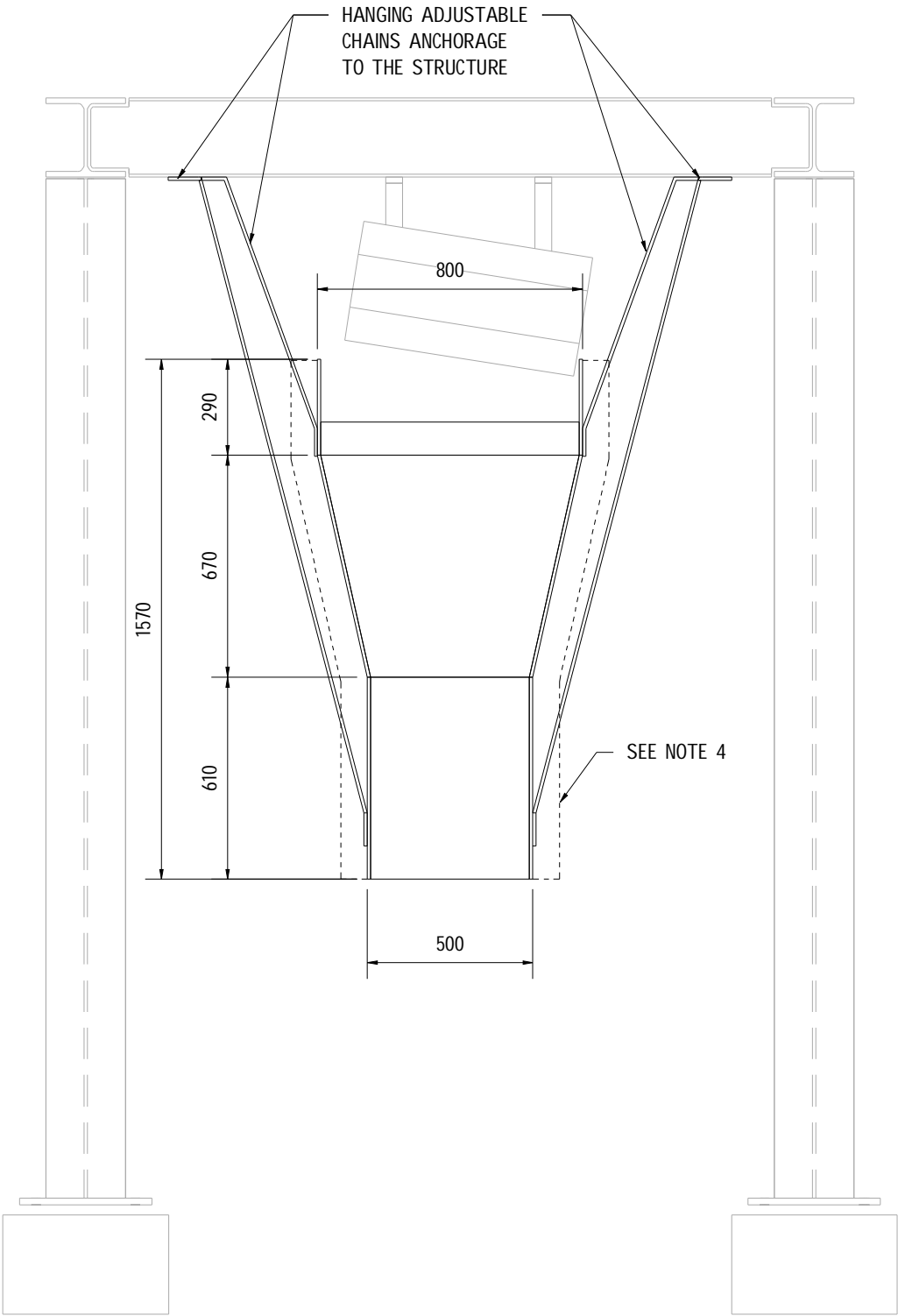
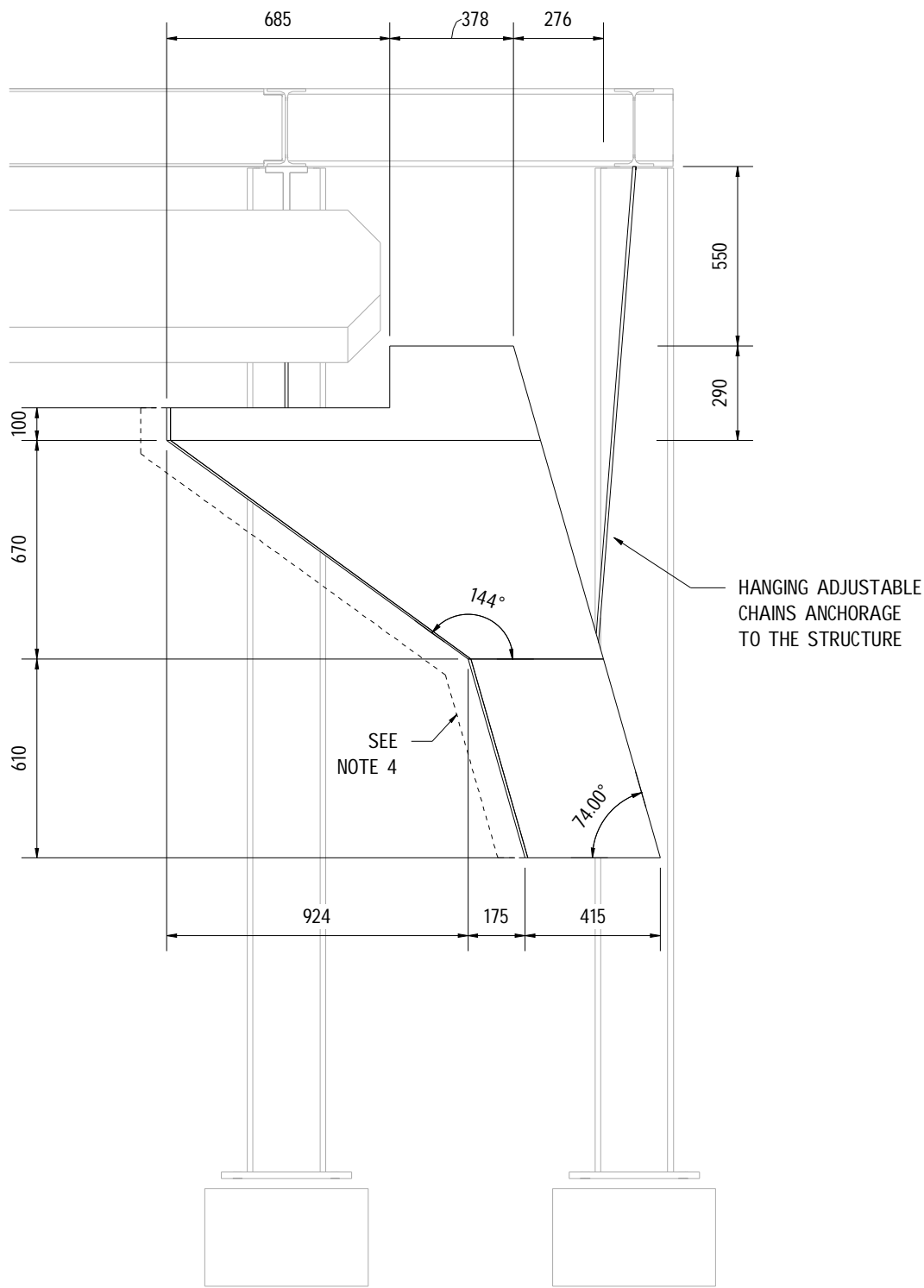


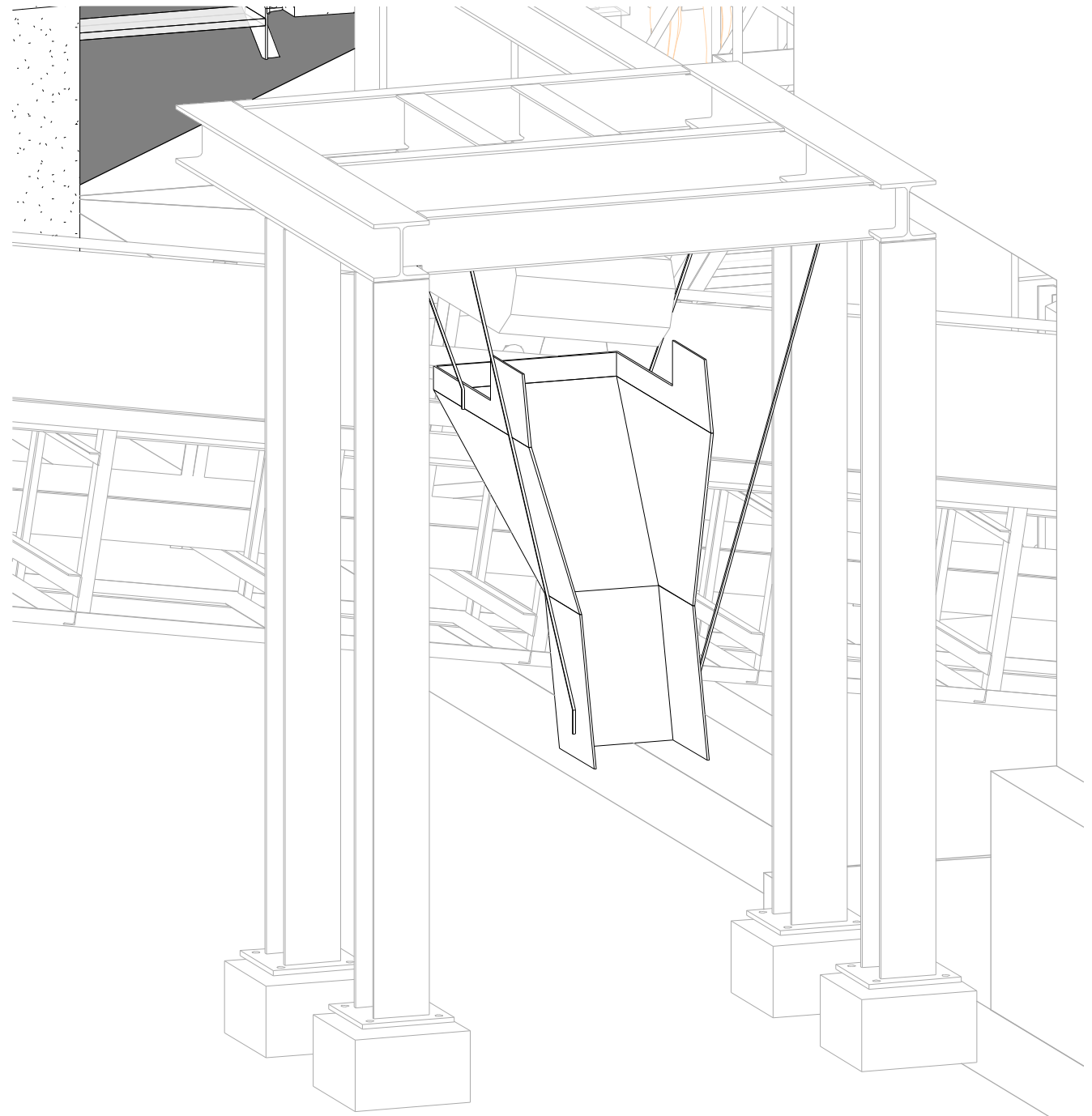
**PLANT VIEW**  
1 : 20






**VIEW A**  
1 : 20



**SECTION 1**  
1 : 20



- Notes:
- 1) FOR DETAIL DESIGN PURPOSES. NOT FOR CONSTRUCTION.
  - 2) THIS DRAWING HAS BEEN PRODUCED WITH THE DIMENSIONS PROVIDED BY PROCESS DESIGN ENGINEERING TO INTEGRATE THE EQUIPMENT IN THE 3D MODEL , AND WITH THE EXCEPTION OF THE DIMENSIONS SHOWN THAT ARE CONSIDERED FIXED, THE REST OF DIMENSIONS AND MATERIAL SPECIFICATION THAT ARE REQUIRED FOR THIS EQUIPMENT TO WORK SAFELY AS PER PROCESS REQUIREMENTS ARE TO BE DEFINED BY EQUIPMENT DETAIL ENGINEERING AND FABRICATION SUPPLIER/MANUFACTURER.
  - 3) THIS DRAWING SHOWS ONLY BASIC AND FUNCTIONAL DIMENSIONS. STEEL PLATES THICKNESS, REINFORCING, BASE PLATES AND STIFFENERS TO BE ADDED.
  - 4) - - - - DASHED LINE DENOTES THE CONTOUR LIMIT OF THE STIFFENERS IN ORDER TO AVOID CLASHING WITH THE REST OF ELEMENTS OF THE PLANT.

0	MRF	17/04/2022	ATB	17/04/2022	ATB	17/04/2022	FOR DETAIL ENGINEERING
Rev.	Author/Date		Checked/Date		Approved/Date		Description
Customer: JSC RMG Auramine LLC					Project:  BEQTAQARI DETAIL ENGINEERING		
					Title:  200-CH-011 DIMENSIONAL DRAWING SCRAP CHUTE		
 					3d model: P1384-200-RV-200-2c-grinding		
					Customer doc. code:		
Area:	Scale:	Format:		Doc. code:			Rev:
200	1:20	A2		P1384-200-EQ-015			0